

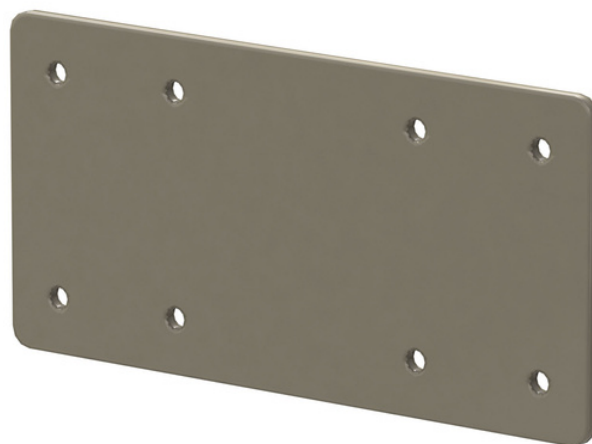
FIXED FLAT PLATE

Spec Sheet

Fixed Flat Plates:

| Part # | Plate Size | Plate Thickness | Hole Size | Number of Holes |
|--------|------------|-----------------|-----------|-----------------|
| 9100 | 3" x 6" | 1/8" | 3/16" | 8 |

| Part # | Plate Size | Plate Thickness | Hole Size | Number of Holes |
|--------|--------------|-----------------|-----------|-----------------|
| 9101 | 4" x 17-3/4" | .075 (14 gage) | 3/16" | 12 |



Specifications

Material:

- Steel

Finish:

- Part # 9100: Black E-Coat
- Part # 9101: Black powder coat paint